

NFHS Boys Volleyball Weekly Rule Interpretations

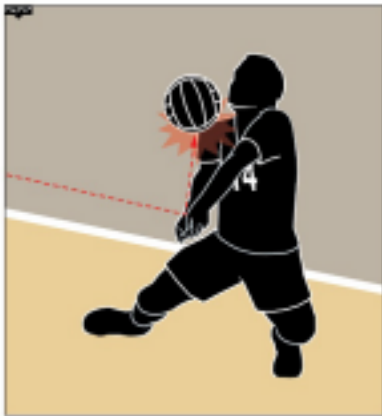
Golden Triangle



Contacting the Ball/Player Actions/Net Play

Beginning with the 2025-26 seasons, the NFHS Volleyball Rules Committee has eliminated the judgment call of a multiple contact fault in a single attempt to play the ball on the second team hit if the ball is next contacted by a teammate.

SITUATION: The second contact for Team A is: (a) a double contact forearm pass by No. 14 (PlayPic A); (b) a double contact overhand pass by No. 6 (PlayPic B). The third contact is by a teammate. **RULING:** Legal – no call.



A.



B.



SITUATION: The setter for Team A double contacts the overhand finger pass and the ball enters the plane of the net. It is next contact by a blocker from Team B.

RULING: Double hit.



SITUATION: Team A's back-row setter jumps to set a second ball above the height of the net and double contacts the ball directly into the hands of a Team B blocker reaching completely over the plane of the net. **RULING:** Over-the-net fault on Team B blocker. **COMMENT:** Team B blocker illegally contacts the ball which is completely on the opponent's side of the net. The double contact by Team A's setter was legal since the ball remained on Team A's side of the net for a Team A player to next play the ball. (9-5-1c, 9-6-3)

SITUATION: Team A's back-row setter jumps to set a second ball above the height of the net and double contacts the ball directly into the hands of a Team B blocker after the ball has entered the plane of the net. **RULING:** Illegal attack fault on Team A setter. **COMMENT:** Team A's setter commits an illegal attack as soon as the ball is legally contacted by the opponent, and this fault takes precedence over the double contact fault. (9-5-4)

9-4-8c SITUATION: During play, the setter hustles to receive an errant pass and contacts the ball multiple times during one attempt to play the ball with an overhand pass for the team's second contact. (a) The volleyball enters the plane of the net and a teammate (attacker) and an opponent (blocker) simultaneously contact the ball; (b) The volleyball enters the plane of the net and the opponent (blocker) contacts the ball first. **RULING:** (a) Legal – play continues; (b) Illegal – double hit. **COMMENT:** Multiple contacts are permitted on the second team hit if

the ball is next contacted by a teammate. Simultaneous contact by both teams is considered legal. Contact by the opponent after the attacking team's multiple contact is a fault by the attacking team.

9.4.8 SITUATION E: The setter on Team R runs down an errant first contact and contacts the ball first with the right and then the left hand on an overhand pass that is next contacted: (a) by Team R's LF; (b) simultaneously by Team R's LF and Team S's RF; (c) by Team S's RF. **RULING:** (a) and (b) legal; (c) multiple contact fault. **COMMENT:** On the second team hit, multiple contacts are permitted if the next contact is by a teammate. Simultaneous contact is considered contact by a teammate.

9.4.8 SITUATION F: Team S's CF attempts to set the second team contact to a teammate and first contacts the ball with the left and then the right hand before sending the ball: (a) over the net and out of bounds; (b) into the antennae; (c) off the net tape and to a teammate who sends the ball over the net on the team's third contact. **RULING:** (a) multiple contact fault; (b) out-of-bounds fault; (c) legal. **COMMENT:** As soon as the ball has crossed the plane of the net after the second team contact, a multiple contact fault is called. Since the ball has not crossed the plane of the net before the antenna contact in (b), the call is out-of-bounds.

9.4.8 SITUATION G: The libero for Team R is hustling after a mishandled first contact and on one attempt to play the ball makes contact with the wrists and then the shoulder. The ball is next contacted by a teammate who sends it over the net to the opponent's court. Play continues. **RULING:** Correct procedure. **COMMENT:** The team's second contact can be multiple contacts as long as it is on one attempt to play the ball and the subsequent contact is made by a teammate.

Test Question:

S#11 has the first team contact and directs the ball toward the net. Before the ball reaches the net, the ball is contacted by a teammate, S#8, and the ball rebounds into the net. As the ball rebounds out of the net, it contacts S#8 who made no effort to play the ball, and a different teammate hits the ball over the net. Choose the correct option below.

A. Play on since there was only one attempt to play the ball. The second contact was passive and unintentional.

B. Illegal successive contacts fault on Team S. Passive, unintentional conduct is still considered player-ball contact.

Answer,

B. Illegal multiple contacts fault should be whistled on Team S. S#8 contacted the ball and without an intervening contact, the ball next contacted S#8. Passive ball-player contact is still considered a contact, and this is not considered a single attempt to play the ball. It is no different than a situation where a player dives and makes a pancake save on a first or second team contact ball, and the ball goes straight up into the air where it descends on the same player's back. Even though the defender isn't actively playing the ball a second time, the ball coming back down and contacting the player is considered a second (passive) attempt. This is different from a ball ricocheting immediately off one body part to another body part in a single attempt to play the ball.